

# NEW OmniVersa®

IN-WALL SHOWER VALVE. ONE VALVE  
NOW, FOR ALL LUXART SHOWERS.



BETTER FLOW,  
BETTER INSTALLATION,  
BETTER VERSATILITY.

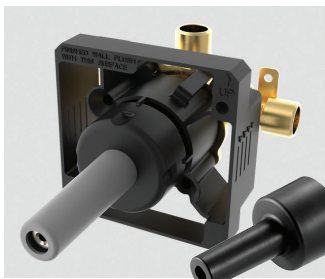
From the intuitive open and close stops for easy maintenance, to the improved pathways and instinctive plaster guard markers that help set exact valve depth for wall variances, Luxart's OmniVersa™ in-wall valve delivers better all around performance.

LUXART®

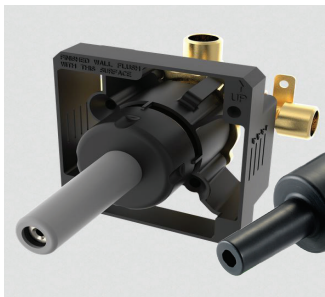
Beauty in every detail.™



A.



B.



C.



D.



## EASY TO INSTALL

For standard shower wall construction, position valve so that the plaster guard is flush with the finished wall. Plaster guard features instinctive markers for ease of wall installation.

## VERSATILE

Available for a variety pipe materials and connection methods Works for thick-wall, thin-wall and back-to-back installations Compatible with a wide variety of Luxart showering trim styles.

## RELIABLE

Forged brass body for long-term reliability latest pressure-balancing technology delivers accurate and reliable performance Limited Lifetime Warranty.

- A. 1800V - Luxart® Rough-In w/ PEX connections & Horizontal Inlets
- B. 1800V-PEXV - Luxart® Rough-In w/ PEX connections & Vertical Inlets
- C. 1800V-LS - Luxart® Rough-In Valve, Less Stops
- D. 1800V - Luxart® Rough-In Valve