

Luxart® VitaBella

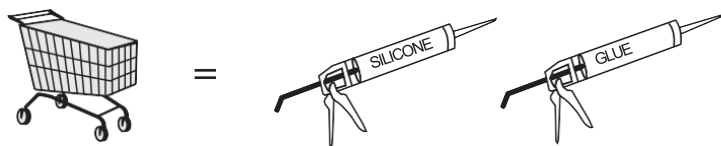
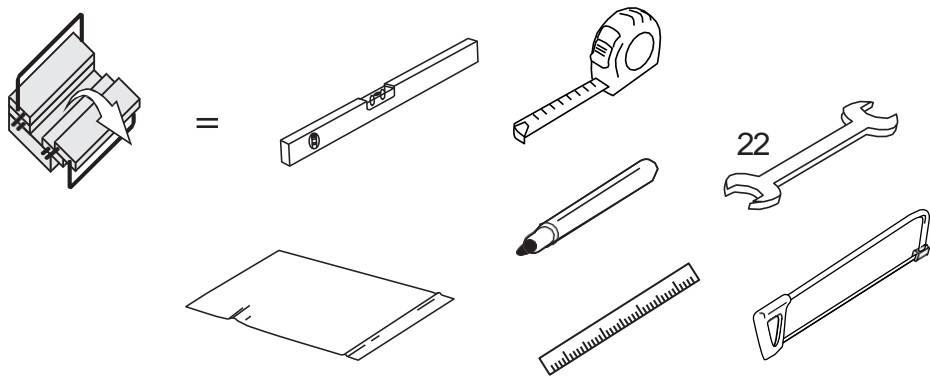
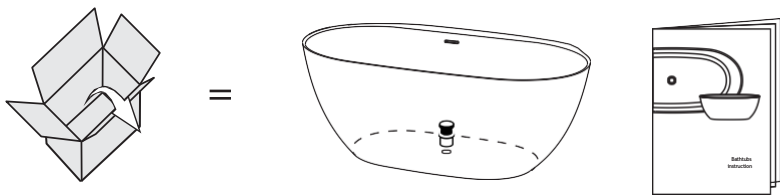
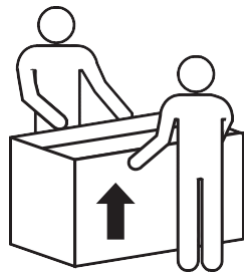
Installation Instructions

**Free Standing
Bathtubs**

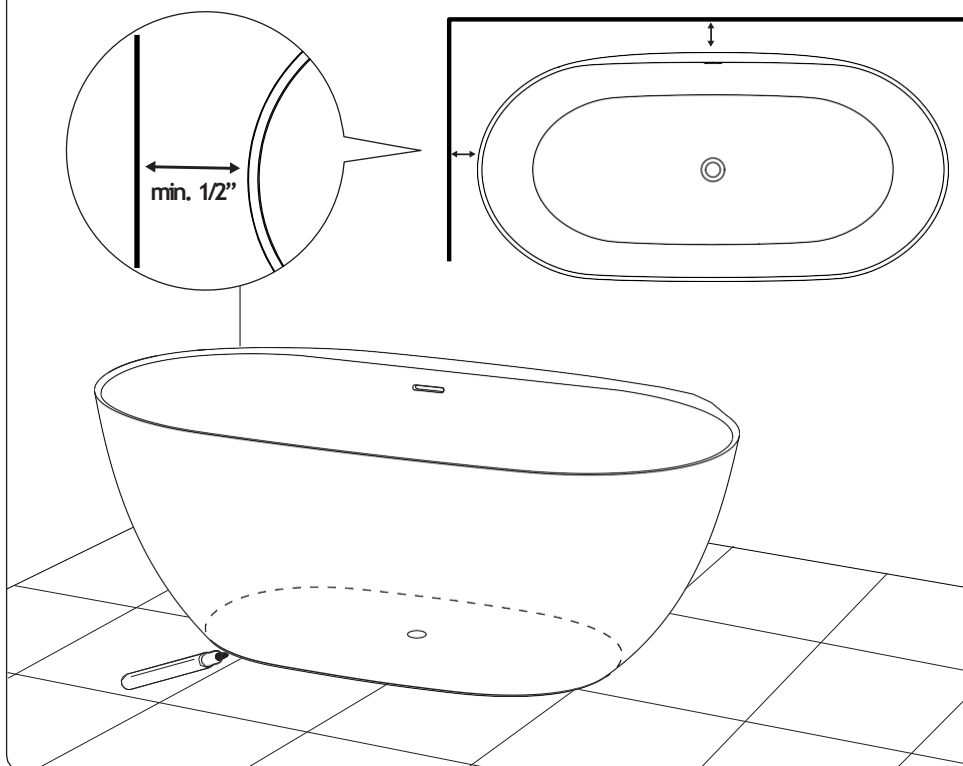


Revised 12/21/2023

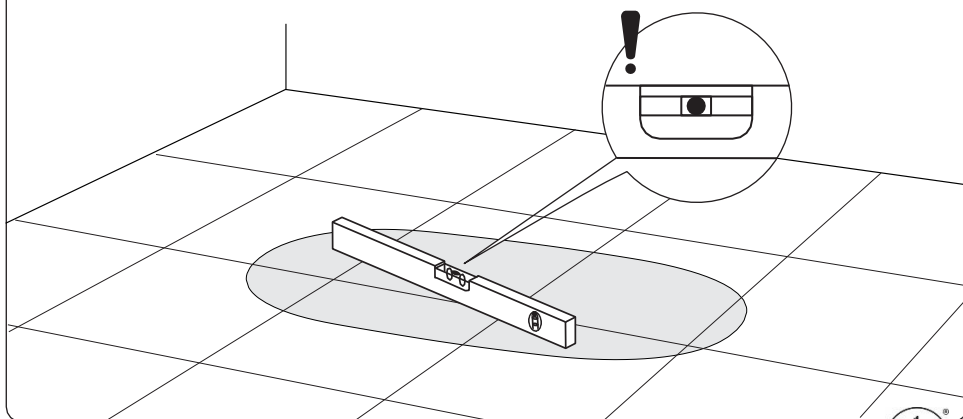
Installation instructions for qualified fitters. After the installation, please pass these instructions to the end-user. In case of a claim, the installation and disassembly costs shall not be covered by the warranty. The warranty shall be valid provided that the product has been installed in accordance with these instructions.



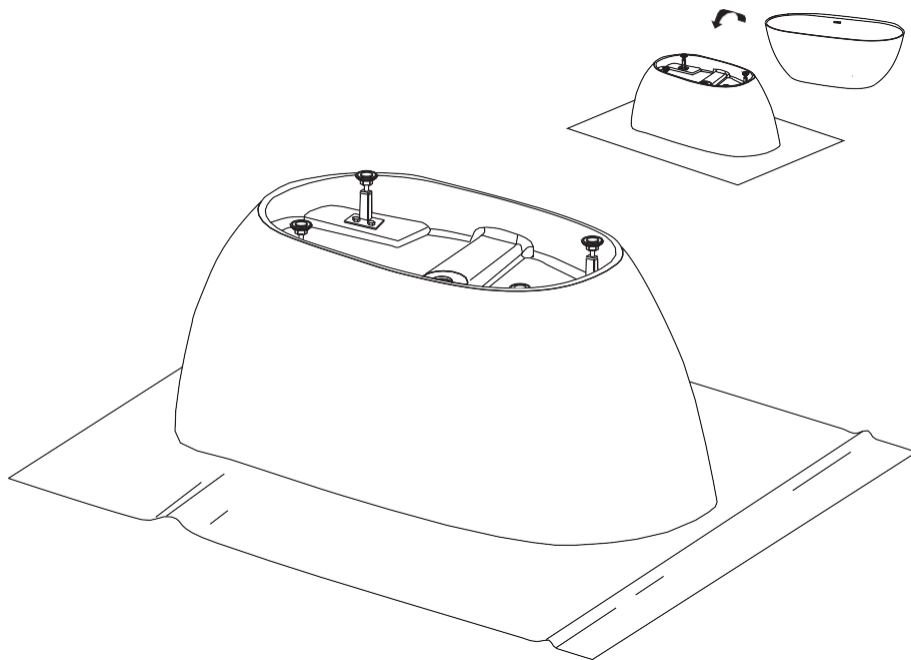
- 1 Set the tub in the desired location and mark the drain hole location on the floor. Then, move the tub away from the desired installation location so that the plumbing can be installed. Bathtub should be placed at least $\frac{1}{2}$ inch away from walls.



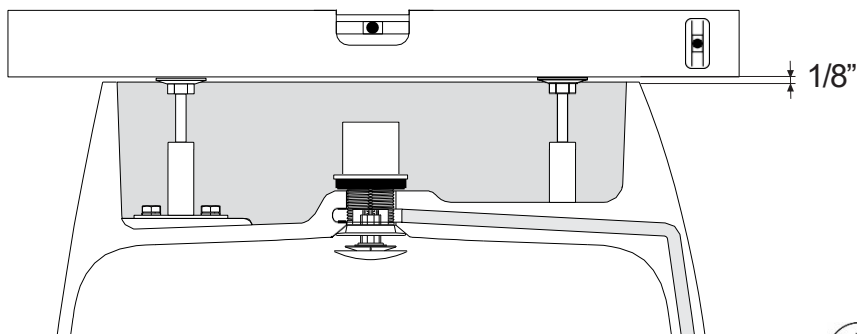
- 2 Your floor needs to be leveled.



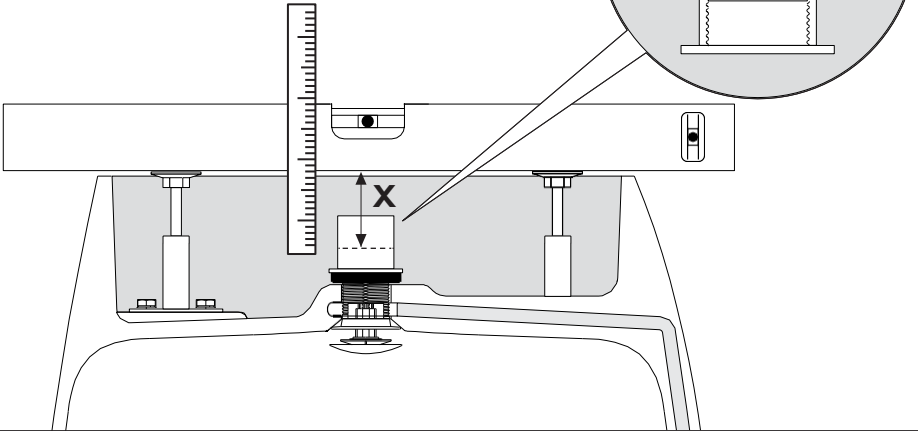
- 3 Turn bathtub upside down and rest it on a moving blanket, cardboard, or other soft surface to prevent scratching the rim. Use caution when turning the bathtub upside down, as the product may be heavy and may require assistance to rotate.



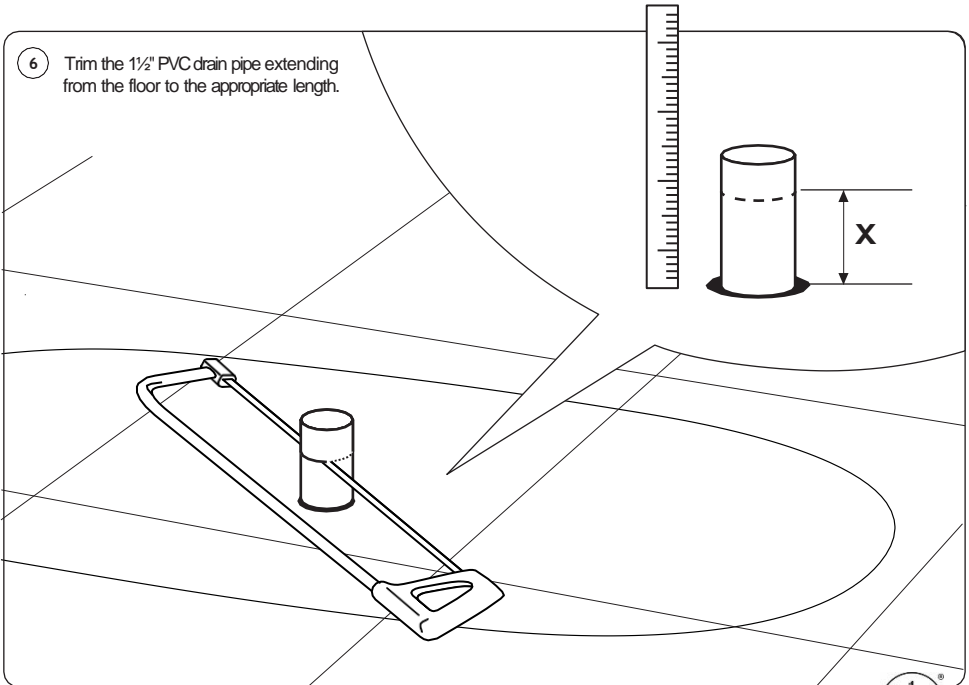
- 4 Place a level across the bottom of the tub to represent floor level. Raise adjustable leveling supports to touch level. Then, raise the support an additional 1/8" to ensure the bathtub is supported by the support feet and not by the tub walls.



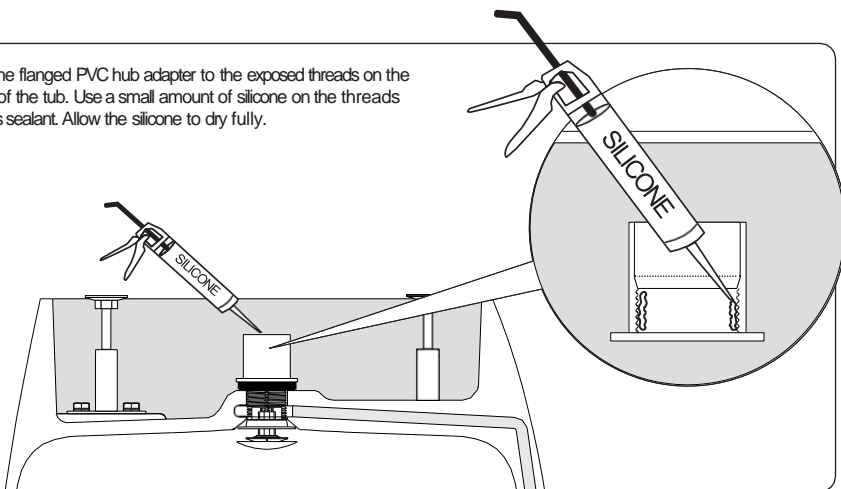
- 5 Once support feet are adjusted, dry fit the PVC hub adapter onto the drain threads. Use a tape measure to determine the gap between the bottom of the tub, starting at the drain inside flange of the hub adapter, and the floor. Use the level to simulate the floor. The drain pipe should extend approximately 1" above the finished floor; however, this will vary depending on the height of the tub.



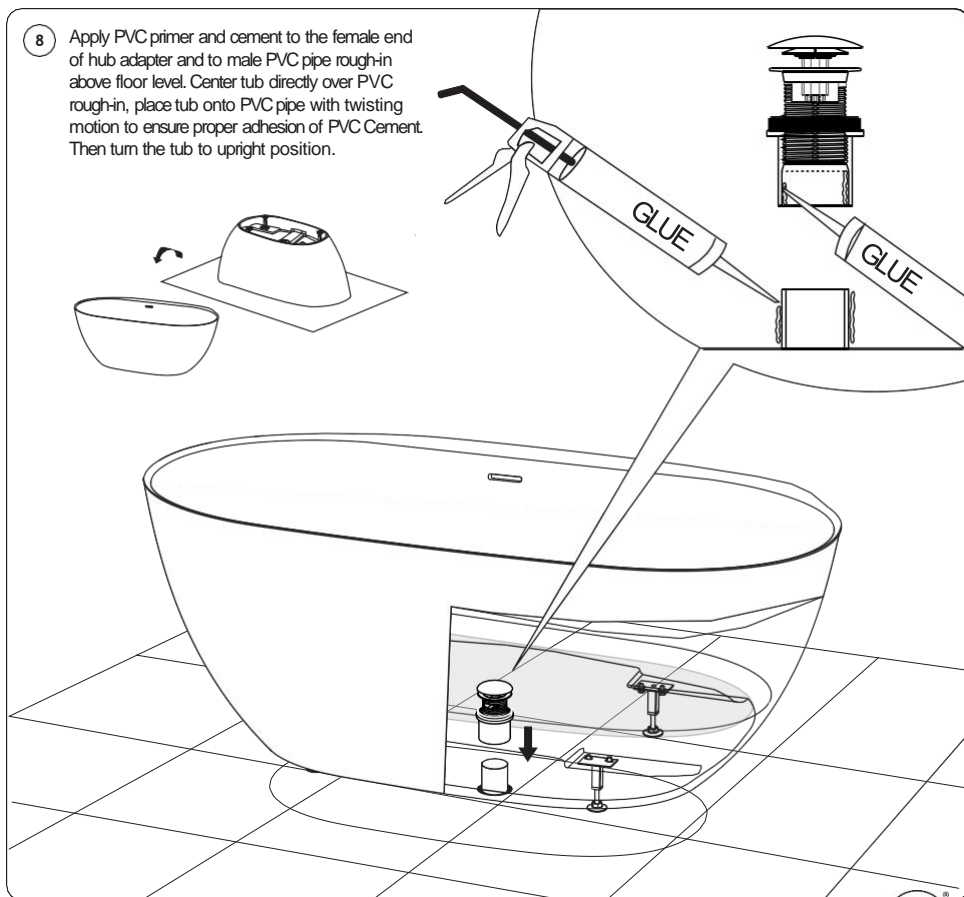
- 6 Trim the 1½" PVC drain pipe extending from the floor to the appropriate length.



- 7 Attach the flanged PVC hub adapter to the exposed threads on the bottom of the tub. Use a small amount of silicone on the threads to act as sealant. Allow the silicone to dry fully.



- 8 Apply PVC primer and cement to the female end of hub adapter and to male PVC pipe rough-in above floor level. Center tub directly over PVC rough-in, place tub onto PVC pipe with twisting motion to ensure proper adhesion of PVC Cement. Then turn the tub to upright position.

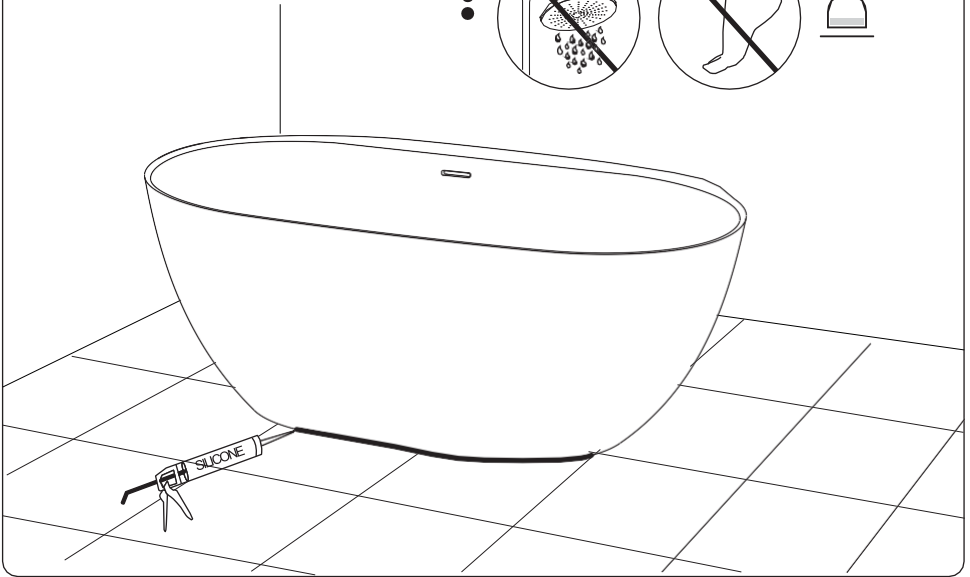


10

For esthetic purposes you can finish your installation by running a bead of neutral cure silicone sealant around the base of the tub where it meets the floor but it's unnecessary for proper installation.



24h



Revised 12/21/2023



Luxart products manufactured by Interquatic® will be covered by Interquatic®'s warranty as follows:

INTERQUATIC 10 YEAR LIMITED WARRANTY
For Interquatic® acrylic freestanding bathtubs

Interquatic®, warrants to the original consumer purchaser that it will, at its option, repair, replace, or make appropriate adjustments of the tub or any of its parts that are found by Interquatic®, in its sole judgment, to be defective under normal residential use and maintenance, so long as it is owned by the original consumer purchaser.

This limited warranty does not cover commercial installations or installations outside the continental United States.

This limited warranty DOES NOT COVER the following:

- Defects or damages arising due to shipping, installation, alterations, accidents, abuse, misuse, use other than bathing purposes, lack of proper maintenance and cleaning and use of other than genuine Interquatic® replacement parts, in all cases whether caused by a service company, plumbing contractor, the owner, or any other person.
- Deterioration through normal wear and tear and the expense of normal maintenance.
- Any modifications, alterations, or customization made by a service representative not authorized by Interquatic® will void warranty.
- Commercial Applications
- Options and accessories, including, aprons, drains, drain covers, overflow drain covers.
- Postage or shipping costs for returning products for repairs, replacement components or replacement unit under this limited warranty.
- Labor or other costs incurred in connection with product removal and/or installation under this limited warranty.
- ANY LIABILITY FOR CONSEQUENTIAL OR INCIDENTAL DAMAGES, ALL OF WHICH ARE HEREBY EXPRESSLY DISCLAIMED, OR THE EXTENSION BEYOND THE DURATION OF THIS LIMITED WARRANTY OF ANY IMPLIED WARRANTIES, INCLUDING THOSE OF MERCHANTABILITY OF FITNESS FOR AN INTENDED PURPOSE. IN NO EVENT SHALL THE LIABILITY OF INTERQUATIC® EXCEED THE PURCHASE PRICE OF THE PRODUCT OR ACCESSORY. (Some jurisdictions do not allow limitations on how long an implied warranty lasts, or the exclusion or limitation of incidental or consequential damages, so these limitations and exclusions may not apply to you.)
- Responsibility for compliance with local code requirements. (Since local code requirements vary greatly. Distributors, retailers, dealers, installation contractors, and users of plumbing products should determine whether there are any code restrictions on the installation or use of a specific product





This warranty gives the original consumer purchaser specific legal rights. You may also have additional rights which vary from state to state, in which case this limited warranty does not affect such statutory rights.

All written or implied warranties are limited to the durations expressed here within. All units must be water tested before installation to validate warranty.

Accessories not factory installed are not covered under this warranty.

Covered Products:

Acrylic free-standing bathtubs

Warranty Service:

In order to make a claim under this warranty, the original consumer purchaser must notify Interquatic® in writing no later than fifteen (15) days from occurrence and must be within the expressed warranty period(s). Send a description of the product, model, and defect to the following address:

**Interquatic®
Warranty Service Department
15565 Wright Brothers Dr.
Addison, TX 75001
(214) 572-2000**

With the issuance of this warranty, Interquatic® stipulates, and the purchasers agrees, that in the event litigation is instituted as a result of this limited warranty, said litigation will be controlled by the applicable laws of the State of Texas, and the buyer and seller both agree that the appropriate forum and venue for any such litigation will be in Dallas County, State of Texas.

**Effective July 1, 2023, due to an update in California law, the start date for product warranties will now be aligned with the date of delivery of the product. This change is for all Luxart products purchased on or after July 1, 2023 by California consumers. (California Legislative Information AB-2912)*

