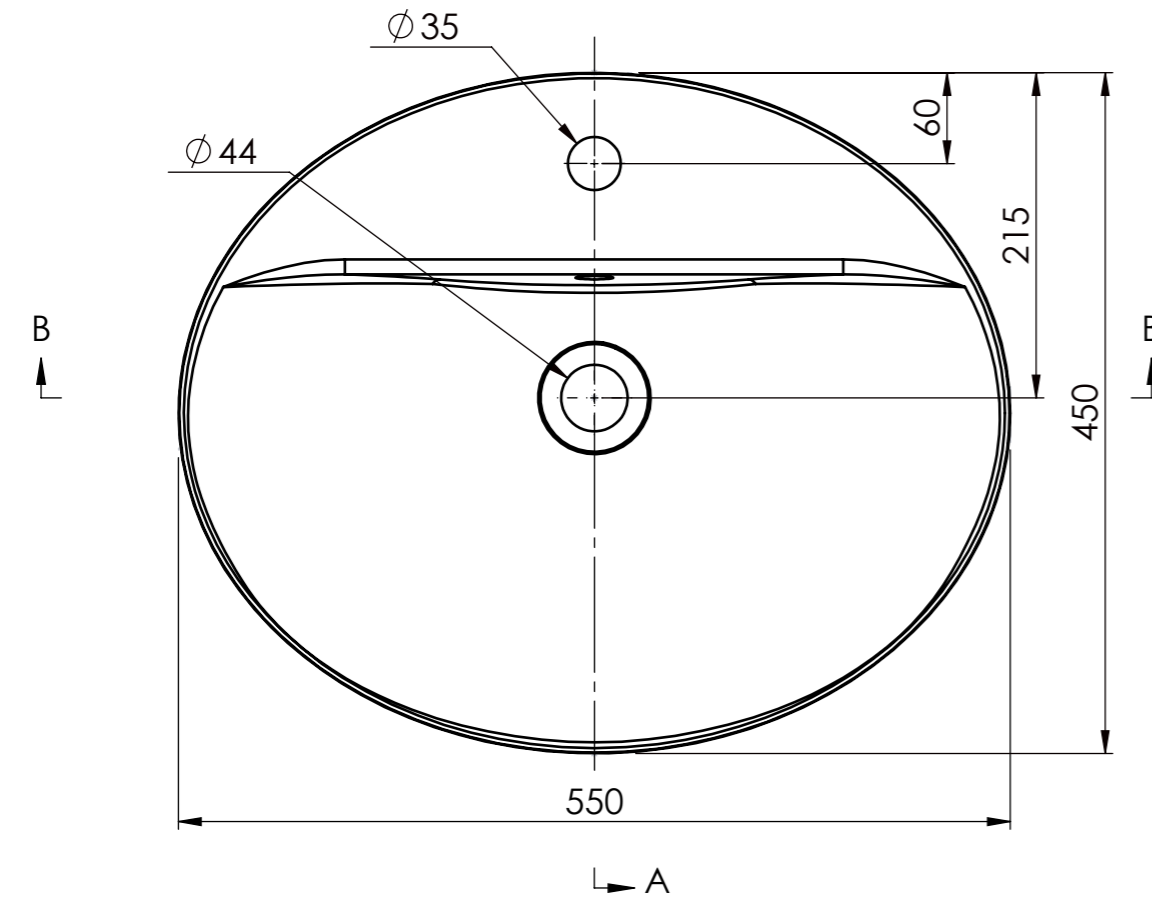
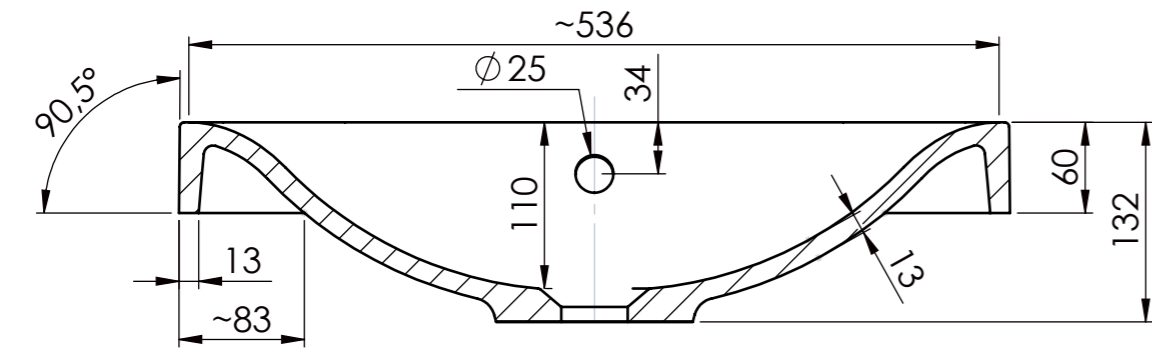
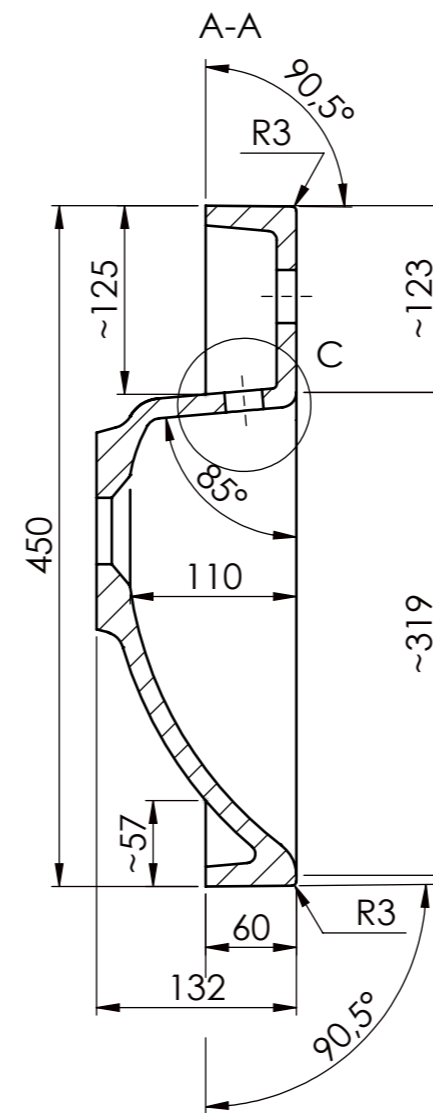
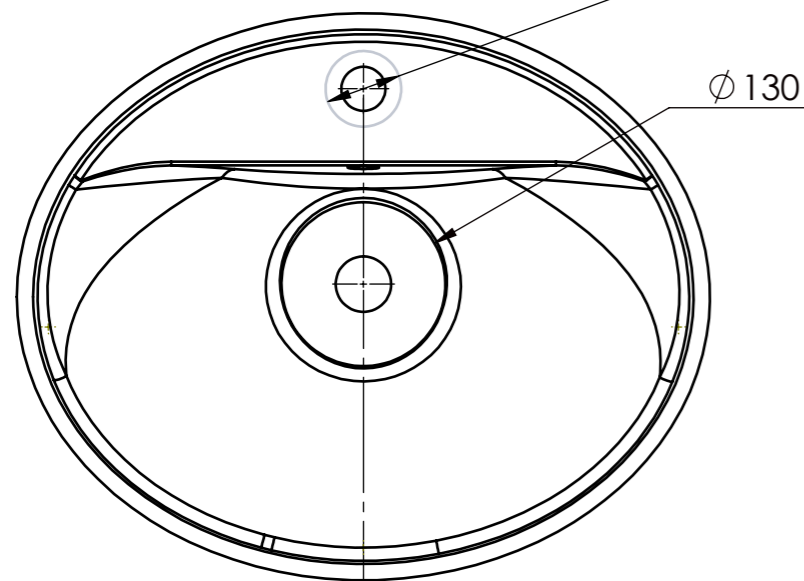


This document must not be copied without our written permission, and the contents thereof must not be imparted to a third party nor be used for any unauthorized purpose. Contravention will be prosecuted.

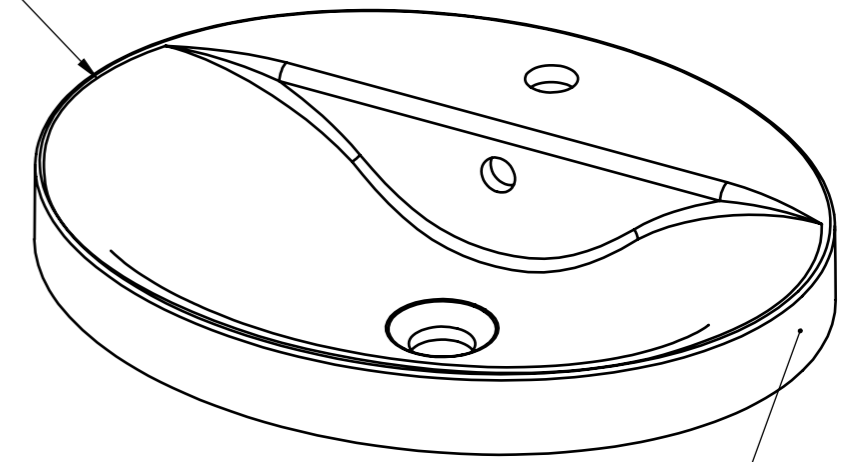


Bottom view/  
Widok od dołu

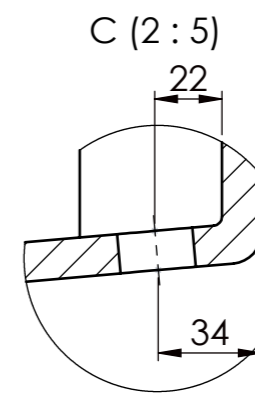
Ø 60 Flat area/Powierzchnia płaska



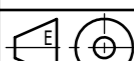


Invisible edges/  
Krawędzie niewidoczne



Product label position with LOGO ICC/  
Pozycja etykiety produktowej z LOGO ICC



Tolerance total	length	+3/0 mm	Drawn by	Created Date	Checked by	Art. Name: UM LXVES 550 OVAL					
	width	+2/0 mm	Katarzyna W	2016-01-05	Zbigniew P	Art. No: 6321120611xx Mould No: F9022061					
	hight	+2/-2 mm	Project status	Client		Customer ID: 3931					
Tol. hight side walls	≤25 mm	+1/-1 mm	Approved	HAJOCA							
	>25 mm	+2/-2 mm									
Tolerance holes location		+2/-2 mm				Material volume[mm³]	Overflow	Tap hole	Main dimensions L x W / H [mm]	Drain	
Tolerance plane bending		+1,5/-1,5 mm				4304422	YES	1	550 x 450 / 132	Regular	
						Surface area[mm²]	Sheet Size	Scale		Current revision	
						624690	A3	1:5		001	
						