



The new degree of comfort.™



Residential Electric  
Professional Classic  
Tankless Water Heaters

# Professional Classic® tankless electric water heaters offer continuous hot water quick and on demand for single point-of-use or multiple applications

## Performance Features

- On demand, consistent and endless hot water
- Compact and stylish with digital temperature control in increments of 1°F ranging from 80°F to 140°F\*
- 99.8% Energy efficient
- Robust copper immersion heating elements with brass top increases durability and are threaded for easy replacement
- Simple Installation
- Digital temperature display
- External controls to adjust temperature in increments of 1°F\*

## Applications

- Whole-Home – up to 6 GPM
- Water-Saver Shower Head – 1.5 GPM
- Standard Shower Head – 2.0 GPM
- Standard Hand Sink – 0.5 GPM
- Kitchen Sink – 1 to 2 GPM
- Bath Tub – ≥ 4 GPM
- Dishwasher – 1 to 2 GPM
- Washing Machine – 1 to 1.5 GPM

Average Gallons Per Minute (GPM) based on 2010 Plumbing Standards

## Warranty

- 5-Year heating chamber and 1-year parts limited warranty
- See Residential Warranty Certificate for complete information

\*RTEX-04 and RTEX-06 only show output temperature and are non-thermostatically controlled

MODEL NUMBER	TEMPERATURE RISE °F								
	0.5 GPM	1.0 GPM	1.5 GPM	2.0 GPM	2.5 GPM	3.0 GPM	4.0 GPM	5.0 GPM	6.0 GPM
RTEX-04	48°	-	-	-	-	-	-	-	-
RTEX-06	75°	37°	-	-	-	-	-	-	-
RTEX-08	-	55°	36°	27°	22°	18°	-	-	-
RTEX-08 (derated 208V performance)	79°	40°	27°	20°	-	-	-	-	-
RTEX-11	-	75°	50°	38°	30°	25°	-	-	-
RTEX-11 (derated 208V performance)	-	56°	37°	28°	-	-	-	-	-
RTEX-13	-	89°	59°	44°	36°	30°	22°	-	-
RTEX-13 (derated 208V performance)	-	69°	46°	34°	-	-	-	-	-
RTEX-18	-	+	82°	62°	49°	41°	31°	25°	-
RTEX-18 (derated 208V performance)	-	90°	60°	45°	36°	30°	-	-	-
RTEX-24	-	+	+	82°	66°	55°	41°	33°	27°
RTEX-24 (derated 208V performance)	-	+	+	60°	48°	40°	30°	24°	20°
RTEX-27	-	+	+	92°	74°	62°	46°	37°	31°
RTEX-27 (derated 208V performance)	-	+	+	68°	55°	45°	34°	27°	23°
RTEX-36	-	+	+	+	98°	82°	62°	49°	41°
RTEX-36 (derated 208V performance)	-	+	+	91°	73°	61°	45°	36°	30°

+ Temperature electronically limited setting on adjustable thermostat on front cover



Tested and certified by the Water Quality Association against NSF/ANSI 372 for lead free compliance.

See specifications chart on back.



RTEX-04, RTEX-06

- Unique Features:**
- External Digital Display – shows outlet temperature
  - Durable Copper Immersion single heating element, field serviceable
  - Simple Installation – 3 Foot electric cable included; Bottom 1/2" NPT water connections



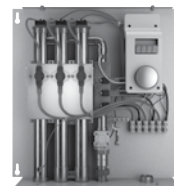
RTEX-08, RTEX-11, RTEX-13

- Unique Features:**
- External Adjustable Digital Thermostatic Control with LED display (+/- 1 degree accuracy)
  - Durable Copper Immersion two heating elements, field serviceable
  - Simple Installation – 3 Foot electric cable and 1/2 NPT adapters included; Side 1/2" compression water connections



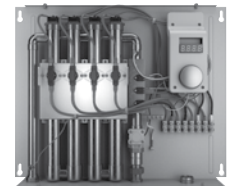
RTEX-18

- Unique Features:**
- External Digital Thermostatic Control with LED display (+/- 1 degree accuracy)
  - Most advanced self-modulation, adjust power to meet hot water demand
  - Durable Copper Immersion two heating elements, field serviceable
  - Simple Installation – Bottom 3/4" NPT water connections



RTEX-24, RTEX-27

- Unique Features:**
- External Digital Thermostatic Control with LED display (+/- 1 degree accuracy)
  - Most advanced self-modulation, adjust power to meet hot water demand
  - Durable Copper Immersion three heating elements, field serviceable
  - Simple Installation – Bottom 3/4" NPT water connections



RTEX-36

- Unique Features:**
- External Digital Thermostatic Control with LED display (+/- 1 degree accuracy)
  - Most advanced self-modulation, adjust power to meet hot water demand
  - Durable Copper Immersion four heating elements, field serviceable
  - Simple Installation – Bottom 3/4" NPT water connections



INTEGRATED HOME COMFORT

Rheem.com



The new degree of comfort.™



Residential Electric  
Professional Classic  
Tankless Water Heaters

## Specifications

DESCRIPTION	FEATURES							ROUGHING IN DIMENSIONS (SHOWN IN INCHES)					
	MODEL NUMBER	kW	AMPS	RECOMMENDED BREAKER SIZE	VOLTAGE	RECOMMENDED WIRE SIZE (CU)	MIN. FLOW (GPM)	MAX. FLOW (GPM)	HEIGHT	WIDTH	DEPTH	WATER CONN.	SHIP WEIGHT (LBS.)
<b>120V 1 HEATING CHAMBER</b>													
RTEX-04	3.5	29A	(1x30)A	120	10 AWG	0.3	4.8	5-7/8	10-7/8	2-3/4	1/2 NPT	4.5	
<b>240V* 1 HEATING CHAMBER</b>													
RTEX-06	5.5	29A	(1x30)A	220	10 AWG	0.3	4.8	5-7/8	10-7/8	2-3/4	1/2 NPT	4.5	
RTEX-08	8.0	33A	(1x40)A	240	8 AWG	0.3	4.8	12-5/8	8-1/4	3-5/8	1/2 CF	7	
RTEX-08 (derated 208V performance)*	5.8	28A	(1x40)A	208	8 AWG	0.3	4.8	12-5/8	8-1/4	3-5/8	1/2 CF	7	
RTEX-11	11.0	46A	(1x50)A	240	6 AWG	0.3	4.8	12-5/8	8-1/4	3-5/8	1/2 CF	8.5	
RTEX-11 (derated 208V performance)*	8.2	29A	(1x50)A	208	6 AWG	0.3	4.8	12-5/8	8-1/4	3-5/8	1/2 CF	8.5	
<b>RTEX-13</b>	<b>13.0</b>	<b>54A</b>	<b>(1x60)A</b>	<b>240</b>	<b>6 AWG</b>	<b>0.3</b>	<b>4.8</b>	<b>12-5/8</b>	<b>8-1/4</b>	<b>3-5/8</b>	<b>1/2 CF</b>	<b>8.5</b>	
RTEX-13 (derated 208V performance)*	10.1	49A	(1x60)A	208	6 AWG	0.3	4.8	12-5/8	8-1/4	3-5/8	1/2 CF	8.5	
<b>240V* 2 HEATING CHAMBERS</b>													
<b>RTEX-18</b>	<b>18.0</b>	<b>75A</b>	<b>(2x40)A</b>	<b>240</b>	<b>8 AWG</b>	<b>0.3</b>	<b>7.0</b>	<b>18-1/4</b>	<b>14-1/2</b>	<b>3-1/2</b>	<b>3/4 NPT</b>	<b>14.78</b>	
RTEX-18 (derated 208V performance)*	13.3	64A	(2x40)A	208	8 AWG	0.3	7.0	18-1/4	14-1/2	3-1/2	3/4 NPT	14.78	
<b>240V* 3 HEATING CHAMBERS</b>													
RTEX-24	24.0	100A	(3x40)A	240	8 AWG	0.3	7.0	18-1/4	17-5/8	3-1/2	3/4 NPT	17.8	
RTEX-24 (derated 208V performance)*	17.5	84A	(3x40)A	208	8 AWG	0.3	7.0	18-1/4	17-5/8	3-1/2	3/4 NPT	17.8	
RTEX-27	27.0	112A	(3x40)A	240	8 AWG	0.3	7.0	18-1/4	17-5/8	3-1/2	3/4 NPT	17.8	
RTEX-27 (derated 208V performance)*	20.0	96A	(3x40)A	208	8 AWG	0.3	7.0	18-1/4	17-5/8	3-1/2	3/4 NPT	17.8	
<b>240V* 4 HEATING CHAMBERS</b>													
RTEX-36	36.0	150A	(4x40)A	240	8 AWG	0.3	8.0	18-1/4	21-5/8	3-1/2	3/4 NPT	22.7	
RTEX-36 (derated 208V performance)*	26.6	127A	(4x40)A	208	8 AWG	0.3	8.0	18-1/4	21-5/8	3-1/2	3/4 NPT	22.7	

\*240V units can be used on 208V single phase with 25% reduced temperature output. Please note per UL standards the rating plate and installation instructions will all be according to a 240V applied voltage. Check with local officials prior to derating the electrical infrastructure.

Product Specifications (all models)	Rated Pressure	25 PSI min., 150 PSI max.
	Certifications	ETL Listed to UL 499 and CSA
	Std. Temp. Settings	120°F (Adjustable 80°F-140°F)
	Temp. Accuracy	+/-1° at steady state flow
	Turn-On	0.3 GPM

### Suggested Specifications

Unit shall have copper clad immersion heating element(s) with brass terminations for increased durability. External temperature control and display adjustable in 1° increments with a range of 80°-140°F. Display shall be capable of displaying setpoint temperature in Celsius or Fahrenheit temperature scales. Unit shall utilize a flow meter with a 0.3 gpm activation point and manage power based on actual flow rate and inlet temperature. Values should be processed 60 times per second. Unit shall be WQA certified lead free, certified to UL499 and CSA22.2.

### Optional Inline Flow Regulator

- Enhanced outlet temperature control
- Install on the outlet side of the heater
- Limit maximum volume to the specified flow rate to ensure exiting temperature is within an acceptable range
- Flow Regulators for 1/2" and 3/4" plumbing connections
- Flow range: 1 to 5 gallons per minute

RHEEM PART NUMBER	GPM RATING OF INSERTS PROVIDED	CONNECTION SIZE
RTE10001A	1.0, 1.5, 2.0	1/2" NPT
RTE10001B	2.0, 3.0, 4.0, 5.0	3/4" NPT

### Suggested Sizing Guide

	COLD CLIMATE (INLET TEMP. 35-45°F)	WARM CLIMATE (INLET TEMP. 50-60°F)	HOT CLIMATE (INLET TEMP. 65-75°F)
RTEX-04	N/A	N/A	N/A
RTEX-06	N/A	N/A	N/A
RTEX-08	RTE10001A	RTE10001A	RTE10001A
RTEX-11	RTE10001A	RTE10001A	RTE10001A
RTEX-13	RTE10001A	RTE10001A	RTE10001A
RTEX-18	RTE10001B	RTE10001B	RTE10001B
RTEX-24	RTE10001B	RTE10001B	RTE10001B
RTEX-27	RTE10001B	RTE10001B	RTE10001B
RTEX-36	RTE10001B	RTE10001B	RTE10001B

Selection based on inlet temperature and an outlet temperature setting of 105°F

In keeping with its policy of continuous progress and product improvement, Rheem reserves the right to make changes without notice.

Rheem.com

Info@rheemus.com • Toll Free 800.374.8806  
Manufacturers National Service Department  
400 Captain Neville Road, Waterbury, CT 06705



INTEGRATED HOME COMFORT